

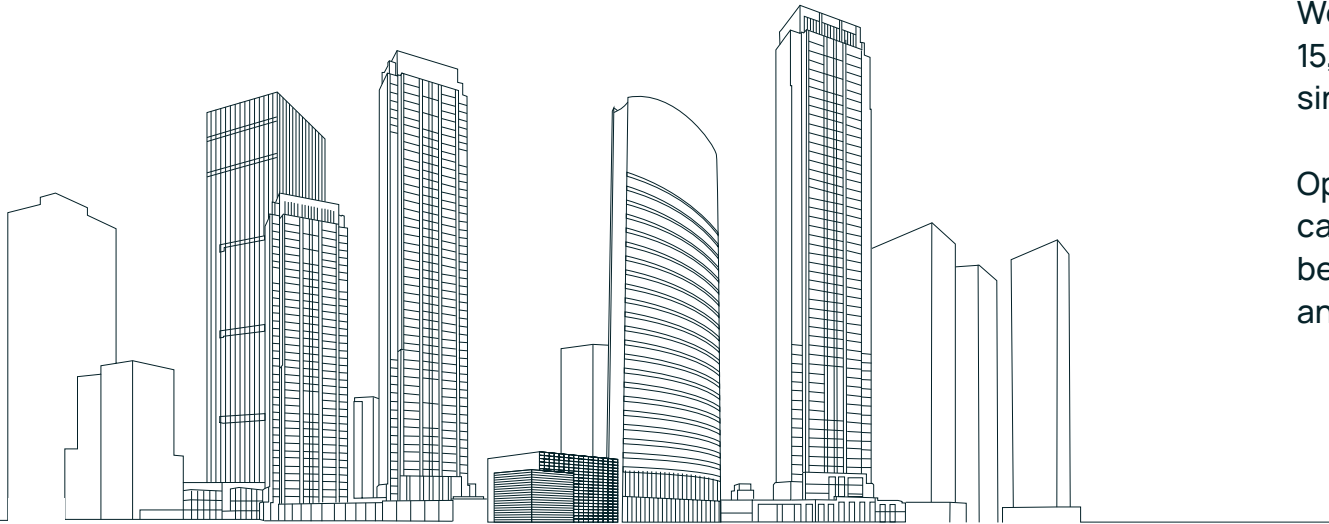
Breathe Smart with the

Sensedge

(SE-100)

The air quality monitor made for smart, healthy, and energy-saving buildings.





We breathe more than 15,000 liters of air every single day.

Optimizing indoor air can have measurable benefits and help people and businesses thrive.

Wellness

Enhance the health and wellbeing of your employees, tenants, or clients.

Productivity

Reduce rates of absenteeism and realize gains from happy and productive employees.

Sustainability

Increase energy efficiency, reduce carbon emissions and reach your sustainability goals.

Profits

Leverage IAQ data to optimize HVAC systems for considerable energy savings.

Your Healthy Building Starts Here

The Sensedge is tested and certified by the RESET standard for accuracy, and fully compliant with the WELL v2 building standard for performance.

Trusted by

Google

facebook

 Microsoft

LinkedIn

Johnson
Controls 

SIEMENS

 Carrier

CBRE

 JLL

 DLR Group

Sterling Bay

ARUP

PERKINS —
EASTMAN

Product Excellence, Every Step of The Way

Data accuracy and reliability guaranteed by best-in-class hardware and software.



1
Sensing components made in Switzerland



3
Tested against complex network environments for robust connectivity



4
Extensive testing across 6,000 individual measurements

5
RESET & BTL certified

Robust Quality Control Process



1

Manufacturing facilities certified by Apple MFi, ISO-9001, ISO-14001, ISO-27001, ISO-13485

2

Custom designed testing chamber to ensure the accuracy and consistency of equipment testing

3

100% traceable production process via unique serial number

The Air Monitoring Solution for Your Needs



PM_{2.5}

TVOC

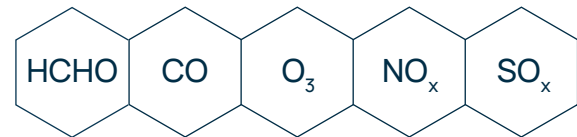
CO₂

Temperature

Humidity

Customizable Modules

The Sensedge is equipped with modular sensors which can be custom-made to fit your project's monitoring needs:



and more!

Accurate Monitoring, No Calibration Needed

With easily replaceable sensor modules, there is absolutely no need to recalibrate your Sensedge. Simply replace the sensors in seconds for continuous and accurate monitoring with little to no maintenance.



Kaiterra Sensedge

Calibration Method

✓ Sensor Replacement

Expertise Required

✓ Anyone

Calibration Cost

✓ < \$200

Time Spent

✓ < 1 Minute



Conventional Monitors

✗ Off-site Calibration

✗ Trained Technicians

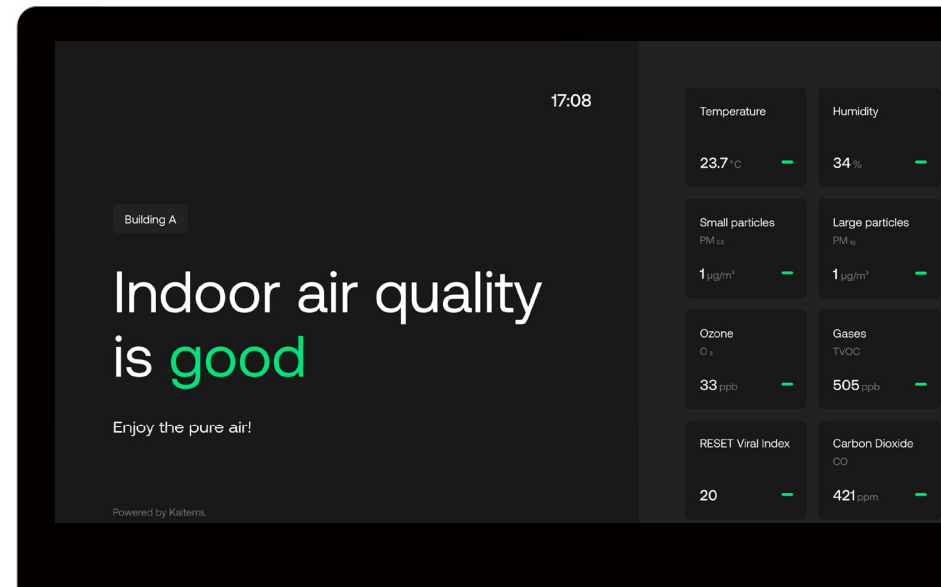
✗ \$1,000+

✗ Weeks to Months

Manage Your Air with the Kaiterra Dashboard

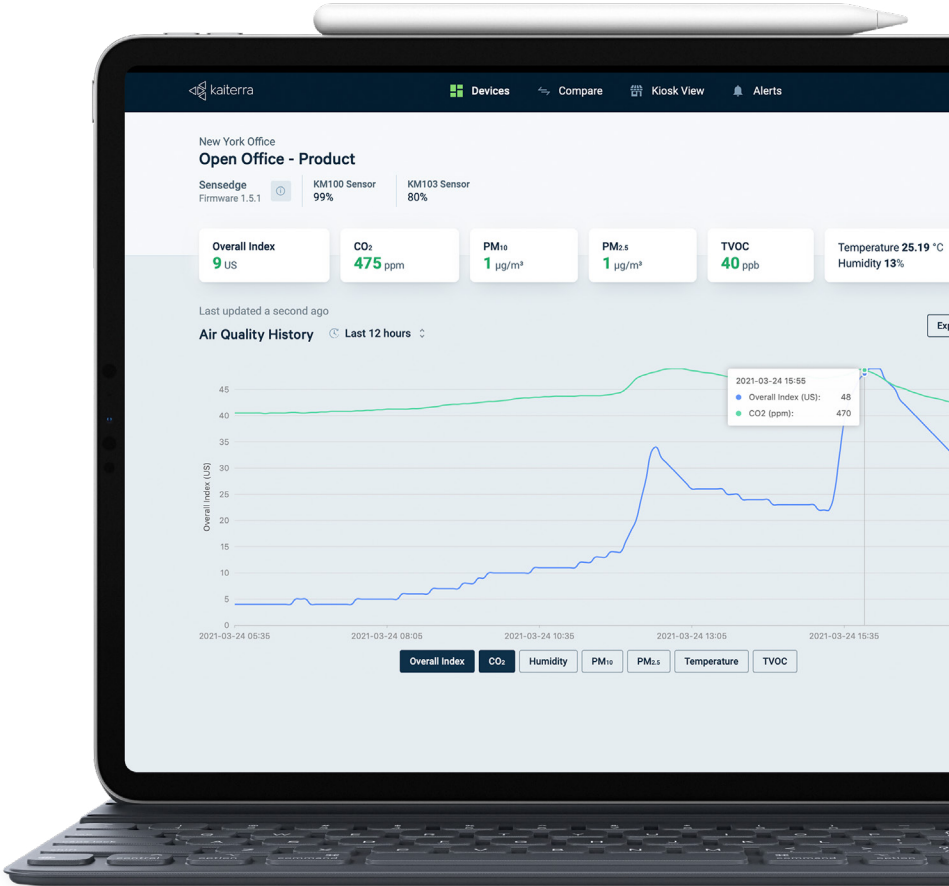
Use the Kaiterra Dashboard to monitor and manage your devices in one portal.

- 1 Monitor and manage multiple devices
- 2 View real-time data and trends
- 3 Identify sources of pollution
- 4 Compare readings across devices
- 5 Receive notifications
- 6 Export historical data



Create Certified Performance Reports

The Sensedge collects minute-by-minute readings and is directly exportable in formats recognized and supported by the WELL, RESET and LEED standards.



Secure, Flexible, Connected



Wi-Fi

Using end-to-end SSL/TLS encryption, the SenseEdge provides maximum security for data transfer.



Ethernet

Using end-to-end SSL/TLS encryption, the SenseEdge provides maximum security for data transfer.

The SenseEdge supports Wi-Fi and ethernet for connectivity, as well as various network configurations, including company proxy servers, hidden SSIDs, and captive portals. Both Static IP and DHCP options are available.

Powerful Automation and Control



 Cloud and Local MQTT

 API

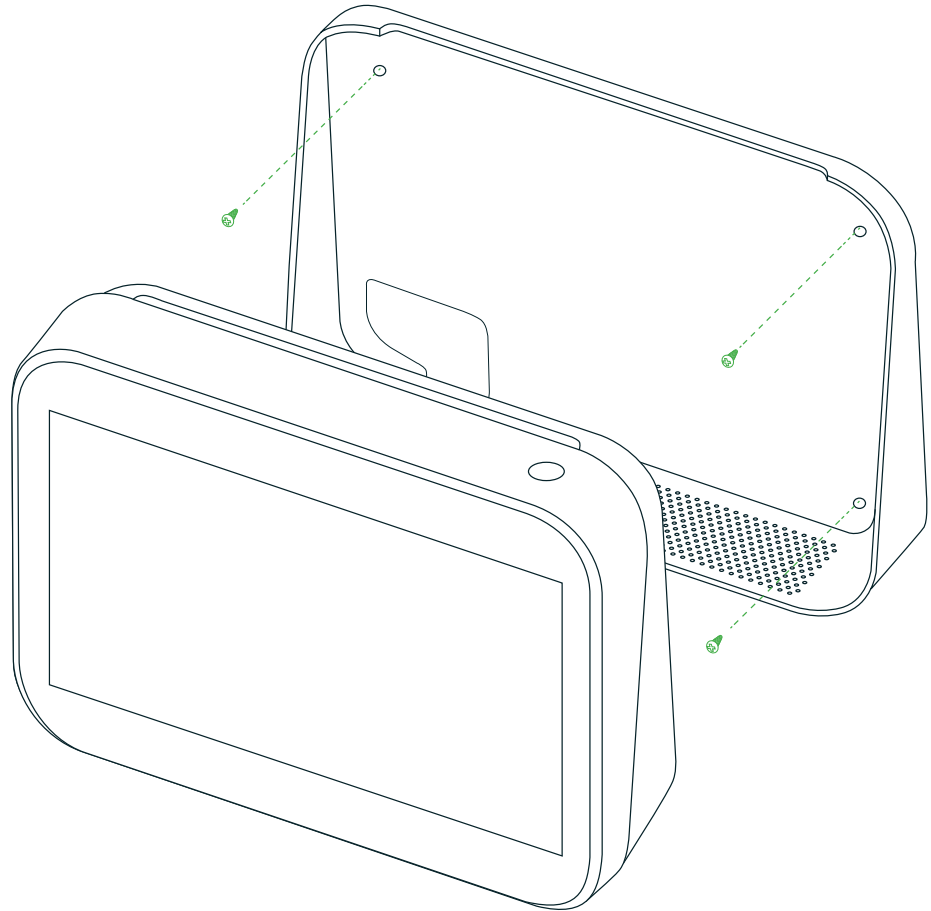
 Modbus

 BACnet

Maximize the performance of your filtration and HVAC systems with flexible connectivity options. Seamlessly integrate to your building's automation control system through our open API, BACnet, and more.

Simple Installation

The Sensedge is easily mounted onto any wall with just three screws. Power on and access your air quality data within minutes.



Product Features



Customizable Modules



8GB On-Board Memory



5200mAh Battery
Up to 8 Hours of
Battery Life



Wi-Fi
Connection



Data
Buffer



7" Full Color
Touchscreen



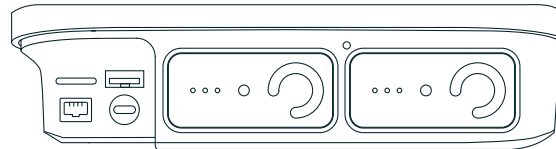
Ethernet
Socket



Micro-SD
Card



Multiple
Languages



Made for Healthy Buildings Worldwide



IWBI Headquarters (WELL Platinum)
New York



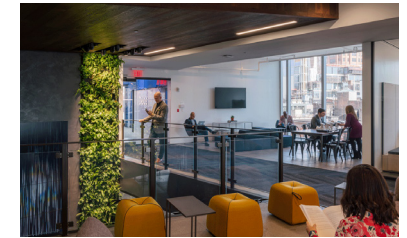
Johnson Controls
Milwaukee



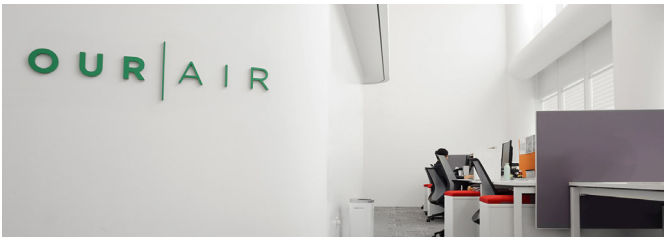
Perkins Eastman
Chicago



Milliken Showroom
San Francisco



Delos Living (WELL Platinum)
New York



MANN+HUMMEL Asia Pacific Headquarters
Singapore



M. Moser
New York, Hong Kong & Shanghai



DARWIN Smart Home
Melbourne

Product Specifications

	Sensor Type	Measuring Range	Sensor Output Resolution	Accuracy
Particulate Matter 2.5 (PM _{2.5})	Laser Particle Sensor (Light Scattering)	1 - 1000 µg/m ³	1 µg/m ³	±10 % (< 30 µg/m ³ : ±3 µg/m ³)
Total Volatile Organic Compounds (TVOCs)	Metal Oxide Semiconductor Sensor (MOS)	0 - 60000 ppb	1 ppb	±15 %
Carbon Dioxide (CO ₂)	Non-Dispersive Infrared Detector (NDIR)	400 - 10000 ppm (full range) 400 - 2000 ppm (range with high accuracy)	1 ppm	±3 % ±50 ppm
Temperature	Digital Sensor	-20 - 100 °C	0.01 °C	±1 °C
Relative Humidity	Digital Sensor	0 - 99 %RH	0.01 % RH	±5 % RH

Dimensions Length: 184 mm (7.2 in)
Width: 146 mm (5.7 in)
Height: 48 mm (1.9 in)

Weight Unit Weight: 800 g (1.76 lbs)

Connectivity & Intergration Wi-Fi Connection 2.4 GHz 802.11 b/g/n
Ethernet
BACnet/IP
Modbus/TCP

Operational Environment Operational Temperature: 0 - 50 °C
Operational Humidity: 5 to 95 %RH,
non-condensing

Data Storage & Logging Log Interval: 1 minute, 1 hour, 1 day
Data Push Interval: 1 minute *
Onboard Memory: 8 GB (> 50,000,000 data points)
External Memory: 32GB Micro SD card
* Customizable upon requests

Power Consumption Input: 100-240V AC via USB-C (5V 1.8A DC)
Operating: 10 W

Battery Capacity & Voltage: 5200 mAh @ 4.2 V
Usage Time: 8 hours

Warranty & Durability Standard Warranty: 1 year *
Expected Lifespan: 5 to 7 years
* Extended warranty available

Certifications Environmental: ROHS, REACH, WEEE
Safety: FCC (US), CE (Europe)
Quality: RESET Air Accredited
Building automation: BTL

Accessories Drywall anchors & screws
USB cable
Power adapter *
* Regional variants available



Get in touch!

Website: www.kaiterra.com E-mail: info@kaiterra.com

Beijing • Crans Montana • Hong Kong • New Delhi • Vancouver